

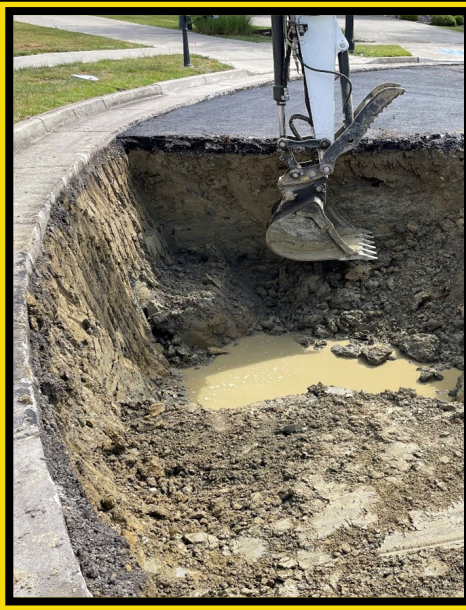


# Clearcreek Road Department

## Monthly Report

June 2023

At the beginning of June, crews performed emergency repair on Elm Brook Trail after the milling crew reported the pavement was pumping. Pumping is a term used when a road base moves vertically beneath the weight of traffic, indicating an issue under the asphalt. In most cases, water causes a soft spot, resulting in the surface breaking and pouring out water, silt, and base material. Investigation showed saturated soil beginning at 18" below the surface. Crews removed the saturated soil, up to twelve feet in one area, until reaching a solid base. Crews then filled the area with gravel to create a solid base for paving, using 327 tons of rock and 166 tons of asphalt. The project took nine days to complete and cost an estimated \$33,269.



After completing the emergency repair, crews worked to finish milling in Quail Meadows subdivision before the cape seal crews arrived on 6/29.

