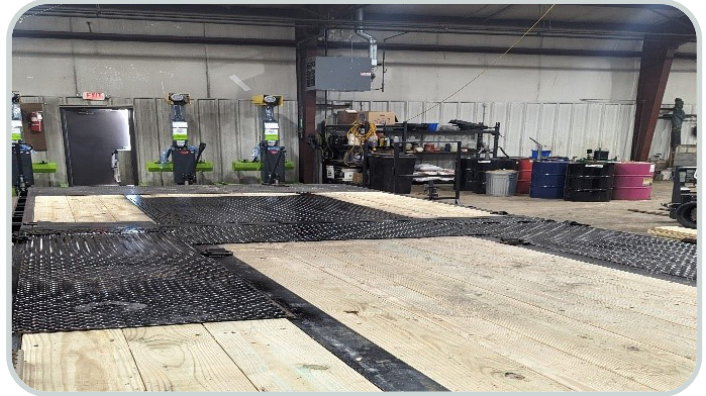




Clearcreek Road Department

Monthly Report February 2024

In February, Crewmembers Mark and Jeff finished logging all 1,952 signs in the township. Next, they began logging and grading catch basins for repairs with the IWorkQ software. Crews also started working on re-flooring the excavator trailer.



Crewmember Allen created walls between beams in the Maintenance Storage Building, allowing safe storage and easy access to emergency supplies and equipment. Additionally, the extra space will assist in shop organization.

Closing out February, crews trained on the new ARI-HETRA lift. The new Ram 5500 truck also arrived, which crews will outfit in late summer when the truck bed arrives.



Finally, crews installed additional shelving to hold Beet Heet tanks, auger boxes, and spreaders, allowing every truck a shelf for snowplow equipment and maintaining shop organization.

