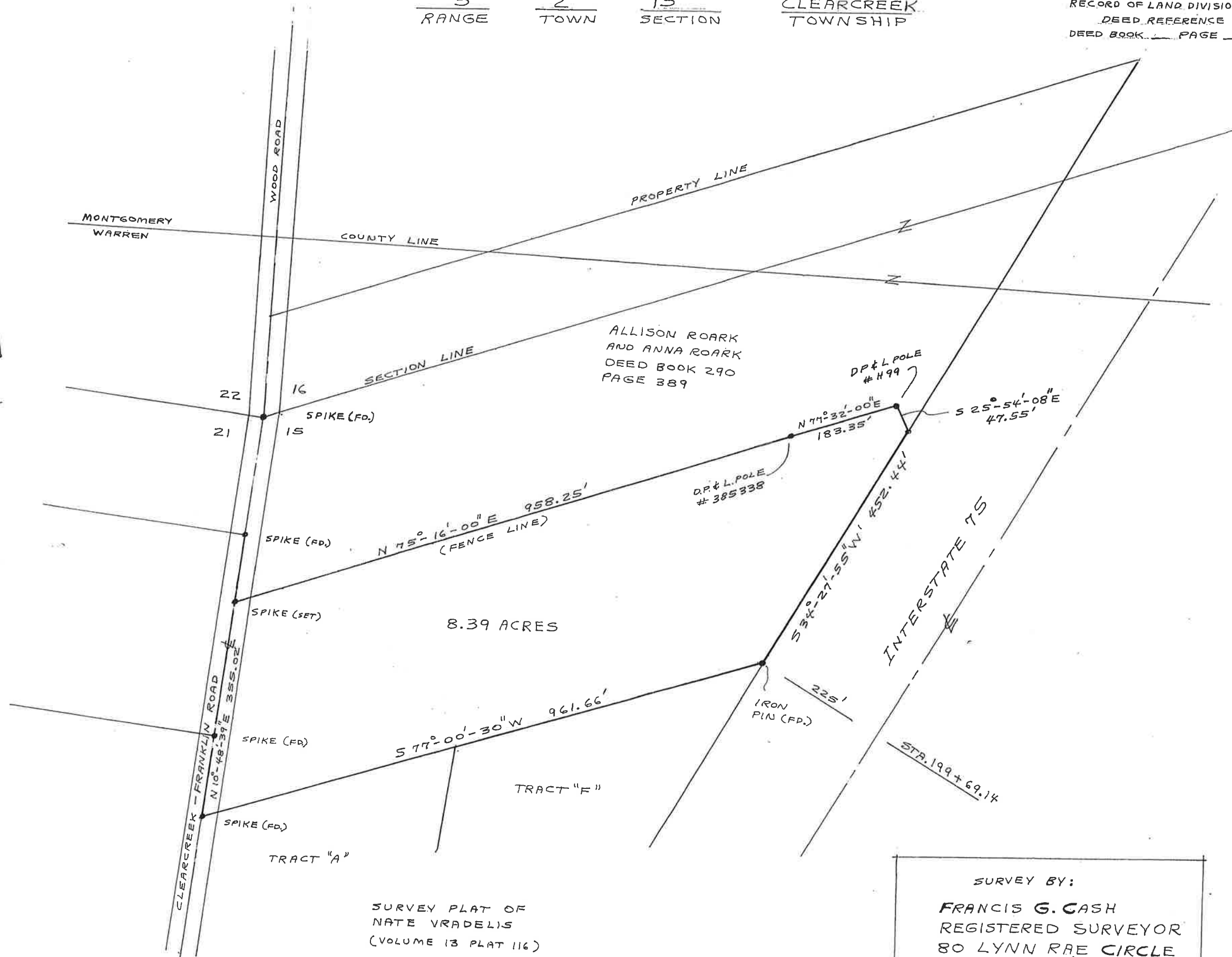


5 2 15
RANGE TOWN SECTION

CLEARCREEK
TOWNSHIP

8-10-76
VOLUME 33 PLAT 75
WARREN COUNTY ENGR.
RECORD OF LAND DIVISION
DEED REFERENCE
DEED BOOK _____ PAGE _____



SURVEY PLAT OF
NATE VRADELIS
(VOLUME 13 PLAT 116)

SURVEY PLAT
ALLISON ROARK

SURVEY BY:
FRANCIS G. CASH
REGISTERED SURVEYOR
80 LYNN RAE CIRCLE
CENTERVILLE, OHIO
DATE JULY 1976 1"=100'

RECEIVED

JUN 28 2024

CLEARCREEK TOWNSHIP
ZONING DEPT.



RECEIVED
 JUN 28 2024
 CLEARCREEK TOWNSHIP
 ZONING DEPT

Sources: Esri, HERE, Garmin, USGS, Intermap, INCREMENT P, NRCan, Esri Japan, METI, Esri China (Hong Kong), Esri Korea, Esri (Thailand), NGA, (c) OpenStreetMap contributors, and the GIS User Community, Warren County GIS

Cadastral Lines	Corporate Line	Parcel Line	Hardware
<all other values>	County Line	ROW Unknown Width Line	Subdivision Lot Line
Line Type	Farm Lot Line	Road ROW	Township and Range Line
Auditors Tract Line	Overpass Line	School Line	Tract Line
Civil Township Line	Subdivision Limit Line	Section Line	VMS Line
			Vacated Road Line

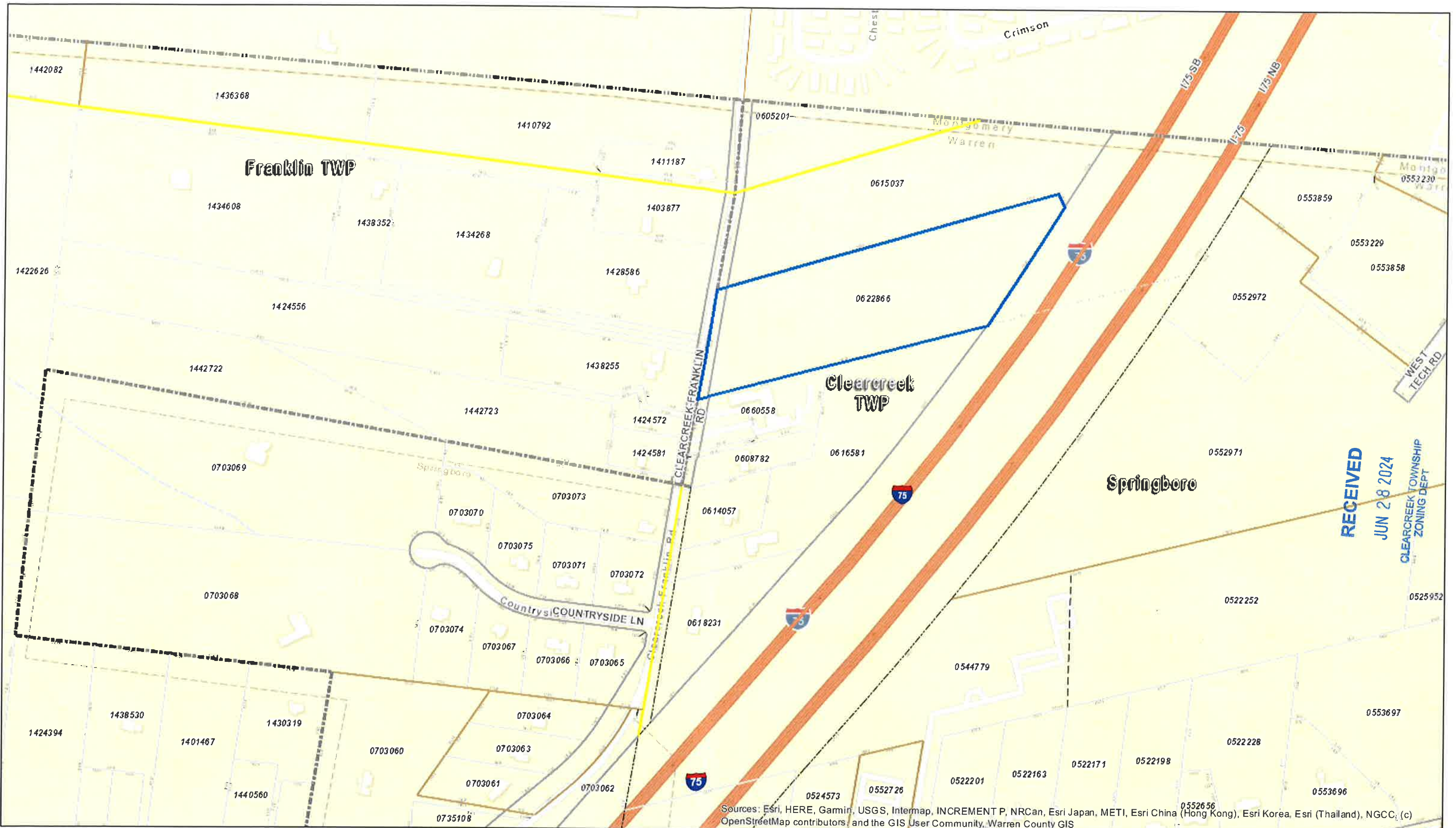
1 inch = 376 feet

Warren County Map

Labeled by Staff: Warren County Aerial with Notification Buffer

The provider makes no warranty or representation with respect to this information, its quality or suitability for a particular purpose. This information is provided AS IS, and the requester assumes the entire risk as to its quality and suitability. The provider will not be liable for direct, indirect, incidental, or consequential damages resulting from any defect in the information. The provider shall have no liability for any other information, programs or data used with or combined with the requested information, including the cost of recovering information, programs or data.

Date: 5/22/2024



Sources: Esri, HERE, Garmin, USGS, Intermap, INCREMENT P, NRCan, Esri Japan, METI, Esri China (Hong Kong), Esri Korea, Esri (Thailand), NGCC, (c) OpenStreetMap contributors, and the GIS User Community, Warren County GIS

Cadastral Lines	Corporate Line	Parcel Line	Hardware
<all other values>	County Line	ROW Unknown Width Line	Subdivision Lot Line
Line Type	Farm Lot Line	Road ROW	Township and Range Line
Auditors Tract Line	Overpass Line	School Line	Tract Line
Civil Township Line	Subdivision Limit Line	Section Line	VMS Line
			Vacated Road Line

1 inch = 376 feet

Warren County Map

The provider makes no warranty or representation with respect to this information, its quality or suitability for a particular purpose. This information is provided AS IS, and the requester assumes the entire risk as to its quality and suitability. The provider will not be liable for direct, indirect, incidental, or consequential damages resulting from any defect in the information. The provider shall have no liability for any other information, programs or data used with or combined with the requested information, including the cost of recovering information, programs or data.

Labeled by Staff: Warren County Map with Account Numbers

Date: 5/22/2024



JUN 28 2024
 CLEARCREEK TOWNSHIP
 ZONING DEPT

Sources: Esri, HERE, Garmin, USGS, Intermap, INCREMENTAL PEARSON, Esri Japan, METI, Esri China (Hong Kong), Esri Korea, Esri (Thailand), NGIS, Swisstopo, OpenStreetMap contributors, and the GIS User Community, Warren County GIS

Cadastral Lines	Corporate Line	Parcel Line	Hardware
<all other values>	County Line	ROW Unknown Width Line	Subdivision Lot Line
Line Type	Farm Lot Line	Road ROW	Township and Range Line
Auditors Tract Line	Overpass Line	School Line	Tract Line
Civil Township Line	Subdivision Limit Line	Section Line	VMS Line
			Vacated Road Line

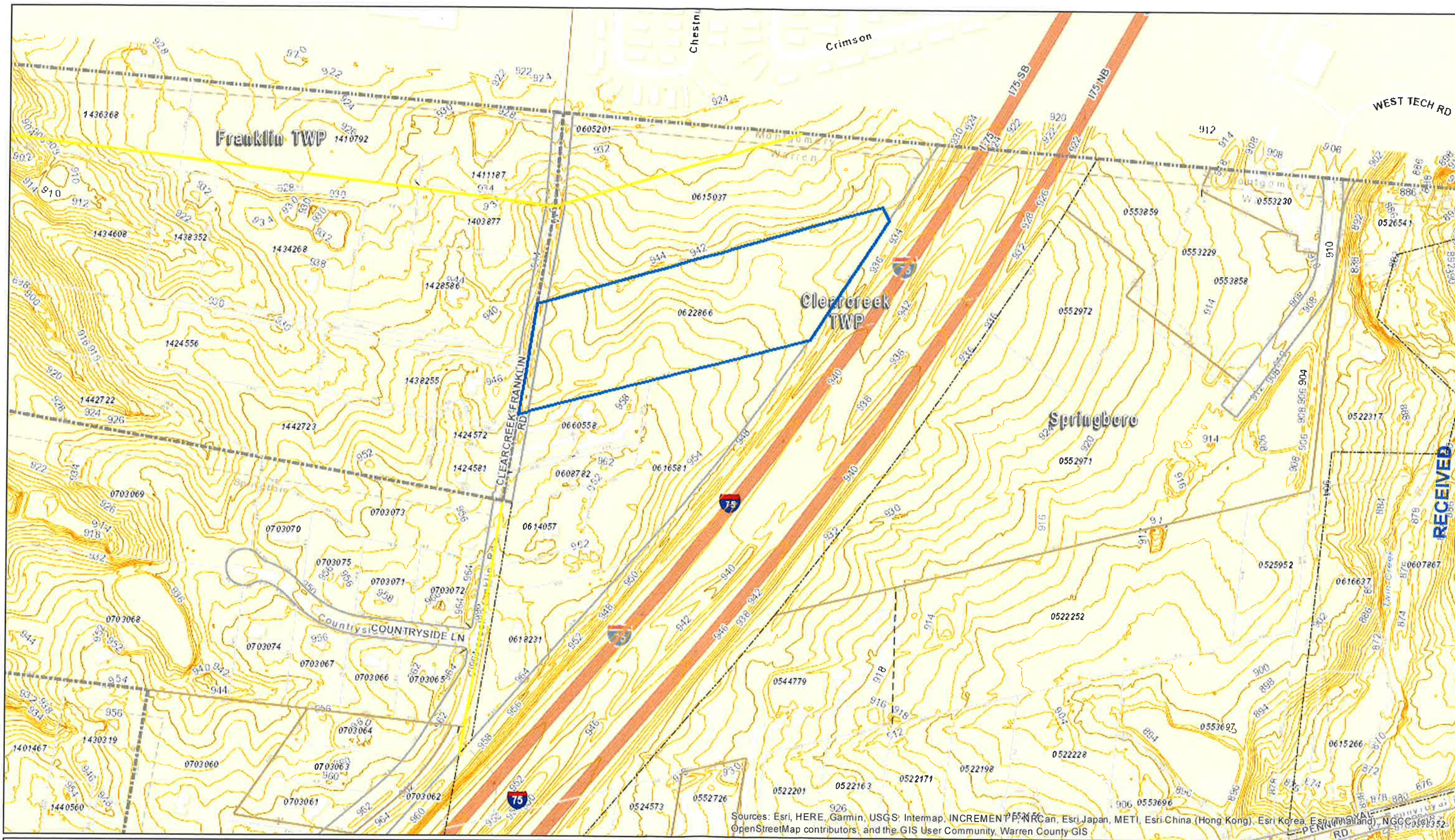
1 inch = 376 feet

Warren County Map

Labeled by Staff: Warren County Aerial with Account Numbers

The provider makes no warranty or representation with respect to this information, its quality or suitability for a particular purpose. This information is provided AS IS, and the requester assumes the entire risk as to its quality and suitability. The provider will not be liable for direct, indirect, incidental, or consequential damages resulting from any defect in the information. The provider shall have no liability for any other information, programs or data used with or combined with the requested information, including the cost of recovering information, programs or data.

Date: 5/22/2024



RECEIVED
 JUN 28 2024
 CLEARCREEK TOWNSHIP
 ZONING DEPT.

Sources: Esri, HERE, Garmin, USGS, Intermap, INCREMENT P, NRCan, Esri Japan, METI, Esri China (Hong Kong), Esri Korea, Esri (Switzerland), NGCC, © OpenStreetMap contributors, and the GIS User Community, Warren County GIS

Cadastral Lines	Corporate Line	Parcel Line	Hardware
<all other values>	County Line	ROW Unknown Width Line	Subdivision Lot Line
Line Type	Farm Lot Line	Road ROW	Township and Range Line
Auditors Tract Line	Overpass Line	School Line	Tract Line
Civil Township Line	Subdivision Limit Line	Section Line	VMS Line
			Vacated Road Line

1 inch = 376 feet

Warren County Map

The provider makes no warranty or representation with respect to this information, its quality or suitability for a particular purpose. This information is provided AS IS, and the requester assumes the entire risk as to its quality and suitability. The provider will not be liable for direct, indirect, incidental, or consequential damages resulting from any defect in the information. The provider shall have no liability for any other information, programs or data used with or combined with the requested information, including the cost of recovering information, programs or data.

Labeled by Staff: Warren County Map with Topography

Date: 5/22/2024



JUN 20 2024
CLEARCREEK TOWNSHIP
ZONING DEPT.

Cadastral Lines	Corporate Line	Parcel Line	Hardware
<all other values>	County Line	ROW Unknown Width Line	Subdivision Lot Line
Line Type	Farm Lot Line	Road ROW	Township and Range Line
Auditors Tract Line	Overpass Line	School Line	Tract Line
Civil Township Line	Subdivision Limit Line	Section Line	VMS Line
			Vacated Road Line

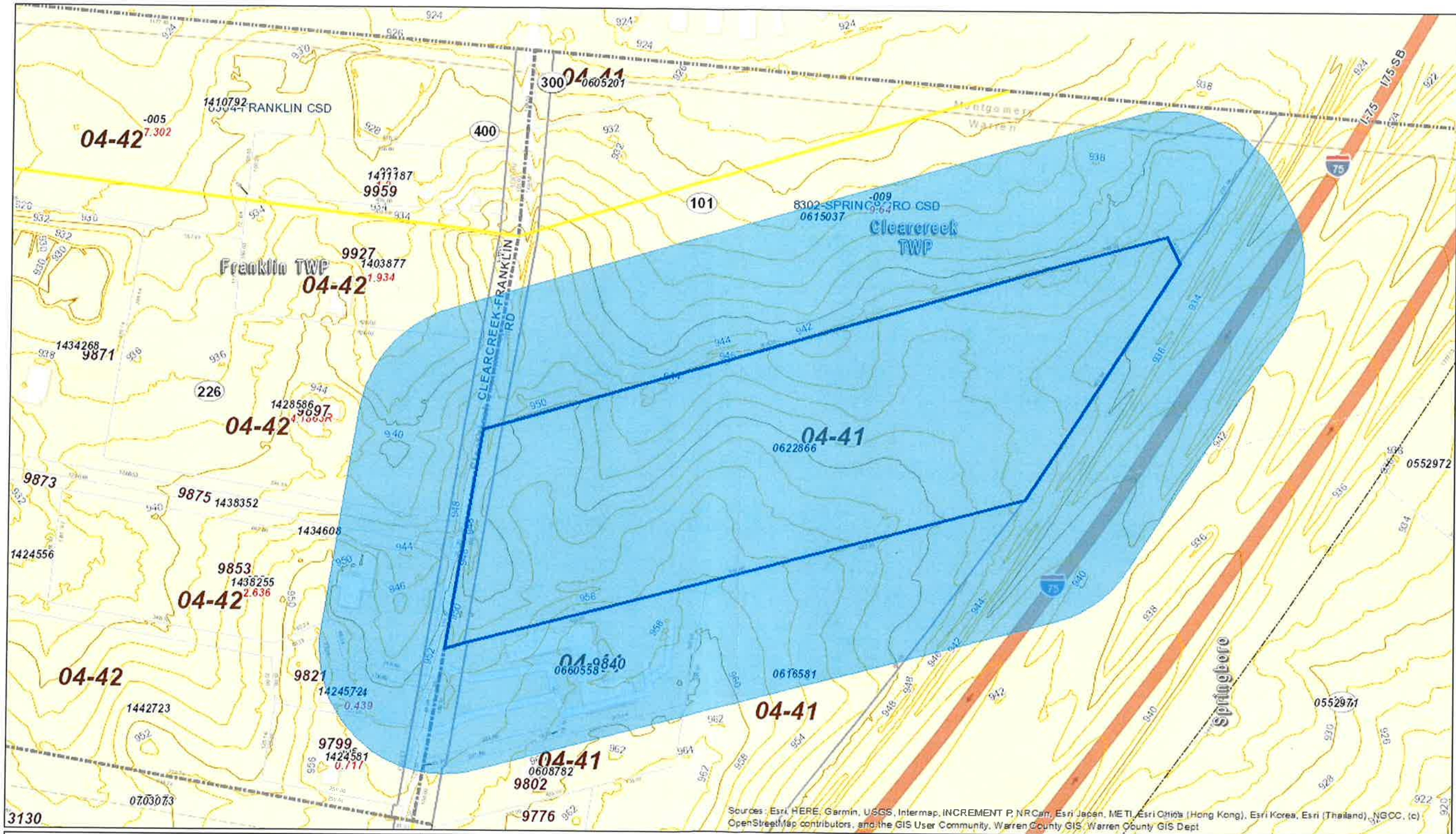
1 inch = 376 feet

Warren County Map

Labeled by Staff: Warren County Aerial with Topography

Date: 5/22/2024

The provider makes no warranty or representation with respect to this information, its quality or suitability for a particular purpose. This information is provided AS IS, and the requester assumes the entire risk as to its quality and suitability. The provider will not be liable for direct, indirect, incidental, or consequential damages resulting from any defect in the information. The provider shall have no liability for any other information, programs or data used with or combined with the requested information, including the cost of recovering information, programs or data.

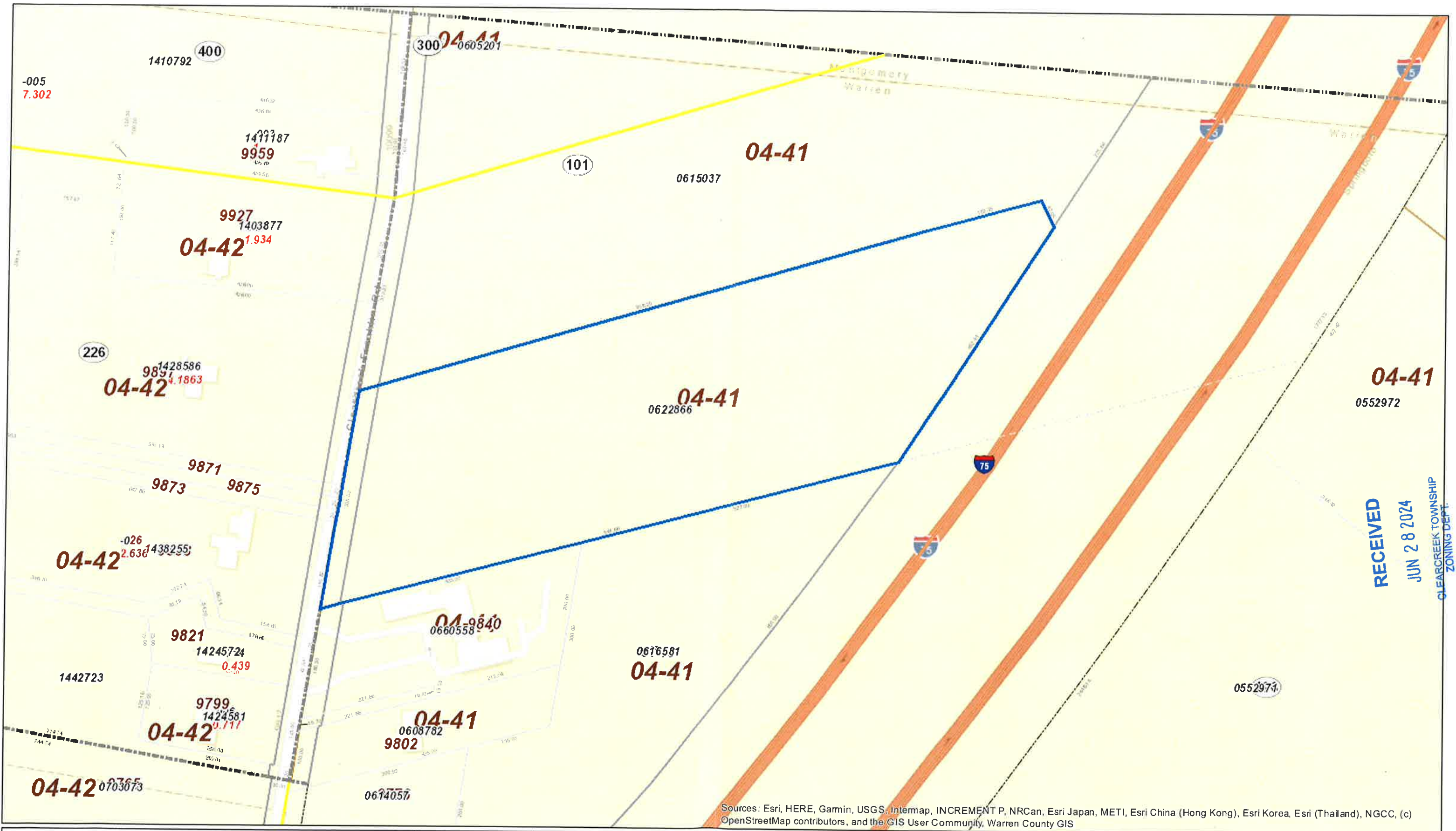


RECEIVED
JUN 28 2024
CLEARCREEK TOWNSHIP
ZONING DEPT.

Cadastral Lines --- Corporate Line --- Parcel Line --- "all other values" Line Type --- Farm Lot Line --- Auditors Tract Line --- Civil Township Line --- County Line --- ROW Unknown Width Line --- Road ROW --- School Line --- Section Line --- Subdivision Limit Line	Hardware --- Subdivision Lot Line --- Tract Line --- VMS Line --- Vacated Road Line	1 inch = 188 feet	<h3 style="text-align: center;">Warren County Map</h3> <p style="font-size: small;"> Sources: Esri, HERE, Garmin, USGS, Intermap, INCREMENT P, NRCan, Esri Japan, METI, Esri China (Hong Kong), Esri Korea, Esri (Thailand), NGCC, (c) OpenStreetMap contributors, and the GIS User Community, Warren County GIS, Warren County GIS Dept. </p> <p style="font-size: x-small;"> The provider makes no warranty or representation with respect to this information, its quality or suitability for a particular purpose. This information is provided AS IS, and the requester assumes the entire risk as to its quality and suitability. The provider will not be liable for direct, indirect, incidental, or consequential damages resulting from any defect in the information. The provider shall have no liability for any other information, programs or data used with or combined with the requested information, including the cost of recovering information, programs or data. </p>
--	--	--------------------------	--

Date: 5/22/2024

Labeled by Staff: Warren County Map with Topography, Notification Buffer and Account Numbers



RECEIVED
 JUN 28 2024
 CLEARCREEK TOWNSHIP
 ZONING DEPT.

Sources: Esri, HERE, Garmin, USGS, Intermap, INCREMENT P, NRCan, Esri Japan, METI, Esri China (Hong Kong), Esri Korea, Esri (Thailand), NGCC, (c) OpenStreetMap contributors, and the GIS User Community, Warren County GIS

Cadastral Lines	Corporate Line	Parcel Line	Hardware
<all other values>	County Line	ROW Unknown Width Line	Subdivision Lot Line
Line Type	Farm Lot Line	Road ROW	Township and Range Line
Auditors Tract Line	Overpass Line	School Line	Tract Line
Civil Township Line	Subdivision Limit Line	Section Line	VMS Line
			Vacated Road Line

1 inch = 188 feet

Warren County Map

Labeled by Staff: Warren County Map with Address Number, Parcel Id and Acreage

Date: 5/2/2024

The provider makes no warranty or representation with respect to this information, its quality or suitability for This information is provided AS IS, and the requester assumes the entire risk as to its quality and suitability. The provider will not be liable for direct, indirect, incidental, or consequential damages resulting from any def The provider shall have no liability for any other information, programs or data used with or combined with the including the cost of recovering information, programs or data.



Labeled by Staff: Warren County Aerial with Address Number, Parcel Id and Acreage